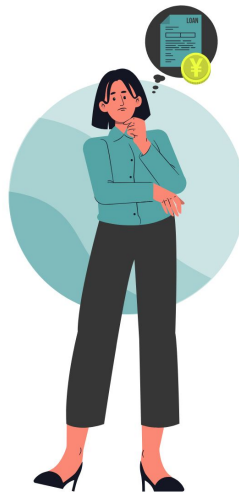


Coaching Conversation FlowChart

Based on the Continuum of Learning-Focused Interaction
©MiraVia, LLC, Lipman & Wellman, 2009 & 2012



**Start with a coaching stance question.*

Question



Response

Does their response keep you in a coaching stance?

Yes



Question

Continue with a coaching stance..



Response

Does their response keep you in a coaching stance?

Yes

Continue Coaching stance

No



Move to a collaborative stance.

Collaborative

Move to a collaborative stance.

No



Consultative

Move to a consultative stance.

No



Response

Does their response keep you in a collaborative stance?

Yes



Continue with a collaborative stance.

Continue Collaborative stance

Question



SAMPLE	Coaching Stance	Collaborative Stance	Consultative Stance
<p>△ <i>Insert possible “to work on goal” here</i></p>	<p><i>Start with a coaching stance question. Based on responses, where will it go? What do you need to prepare?</i></p>		
	<p><i>What coaching tools do you plan to use?</i></p>	<p><i>What collaborative tools do you plan to use? What do you need to bring prepared to complete together?</i></p>	<p><i>What consultative tools do you plan to use? What do you need to bring prepared to guide the work needed to be done?</i></p>
<p>BITE-SIZED ACTION: <i>Record bite-sized action item here after discussion with coachee.</i></p>			